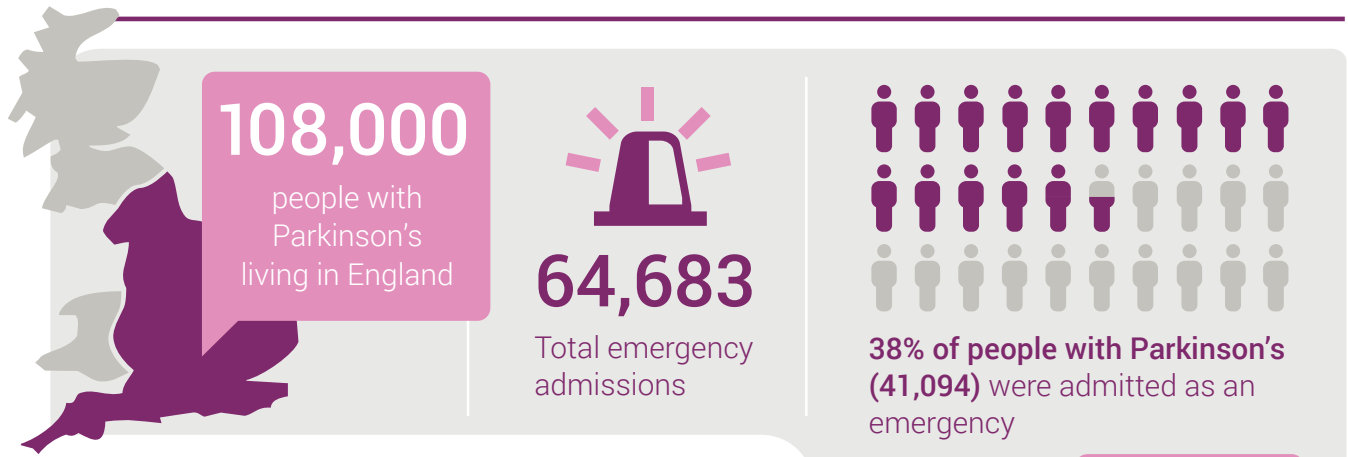


# Parkinson's in England in 2015/16



Total emergency admissions cost

**£119million**



**1.57x**

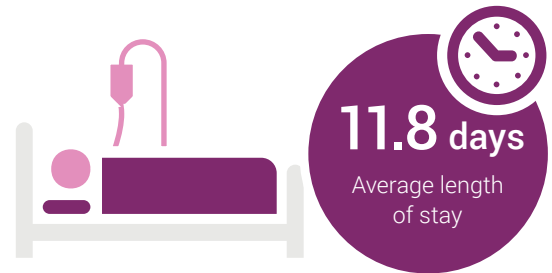
average number of emergency admissions per person needing emergency care

Emergency care accounts for...

**67%** of Parkinson's admissions



**72%** of Parkinson's hospital costs



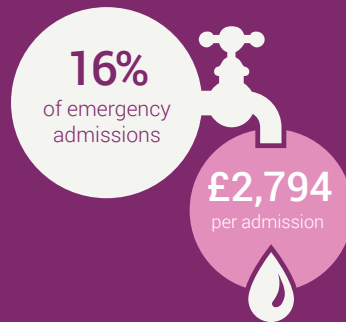
**£1,840** Average emergency admission cost

Some of the most common reasons for emergency admissions were preventable ones like urinary tract infection and falls but Parkinson's dementia is also costly.

Falls



Urinary tract infections



Parkinson's dementia



Wilmington Healthcare

[www.nhis.com](http://www.nhis.com) | [www.wilmingtonhealthcare.com](http://www.wilmingtonhealthcare.com)