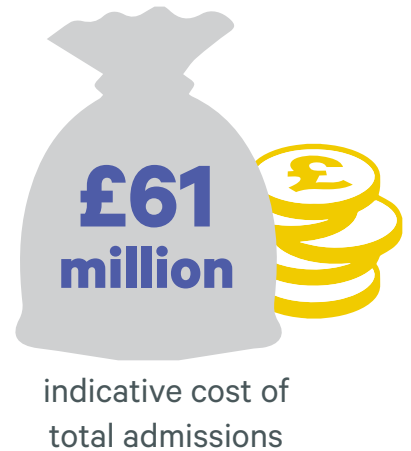
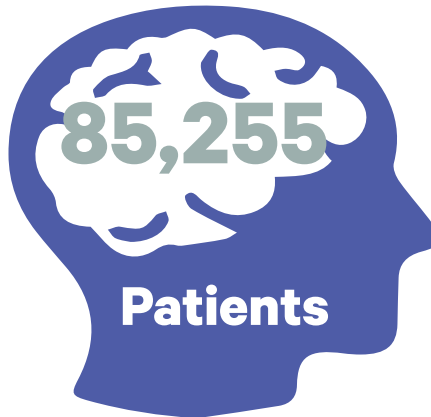
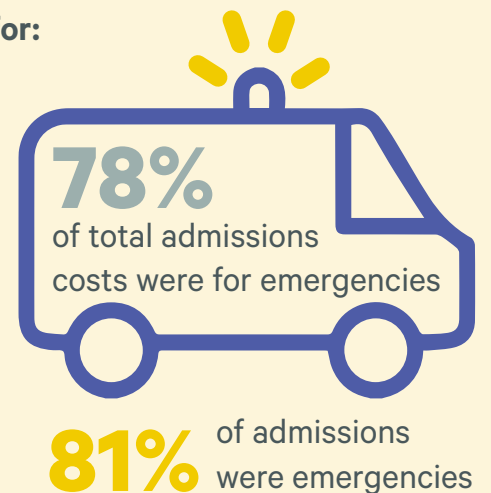
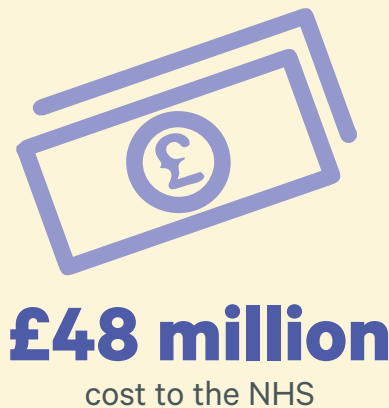


# Headache and migraine

Headache or migraine primary hospital admissions in England, 2016/17



In 2016/17 headache and migraine emergency care accounted for:



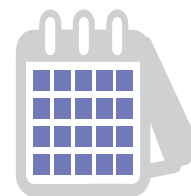
**1 in 7**  
people in the UK suffer from migraine



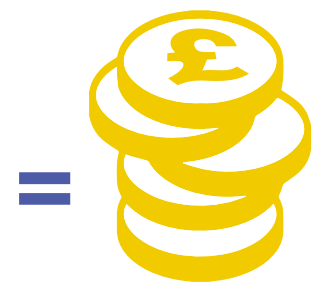
A migraine can last between  
**4 - 72**  
hours



**WOMEN**  
are three times more likely than men to have migraine



**25 million**  
days per year taken off work due to migraine



Estimated to cost the UK economy  
**£2.5 billion**  
annually

Secondary care data is taken from the English Hospital Episode Statistics (HES) database produced by NHS Digital, the new trading name for the Health and Social Care Information Centre (HSCIC), <http://www.digital.nhs.uk/hes> Copyright © 2010 - 2018, re-used with the permission of NHS Digital. All rights reserved. Migraine Action (2017). <http://www.migraine.org.uk>. The Migraine Trust (2017). <https://www.migrainetrust.org>