

Solus emails: primary care audiences

Targeted emails to a consented GP audience, and the wider GP and primary care management database

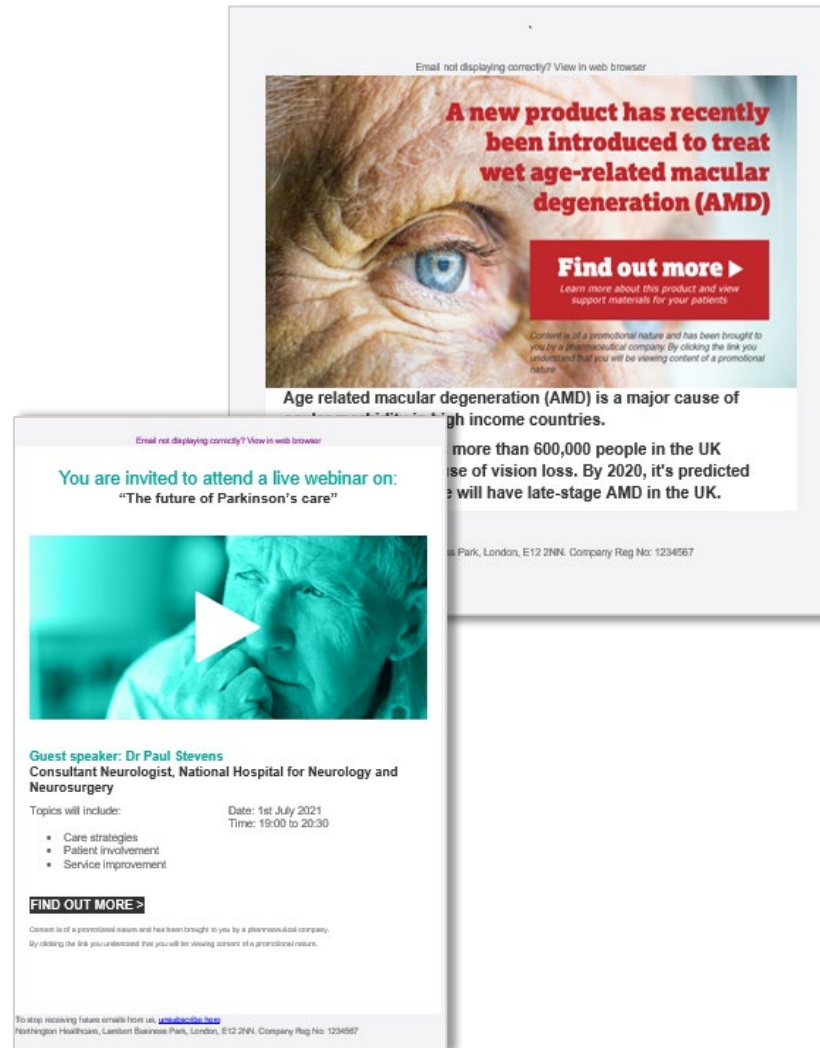
We'll package your content into a branded email, exposing your brand to targeted and engaged audiences in primary care



Your email will be sent to OnMedica's membership of 8.5k verified doctors, who have consented to receiving promotional content, as well as an additional c.10k GP non-members



Segment these audiences by location (geo/ICS), clinical interests and channel preferences in order to deliver targeted messaging and maximise engagement



Our clients use solus emails to:

- Advertise GP webinars and events
- Drive GP engagement with surveys and opinion polls
- Promote primary care products and services

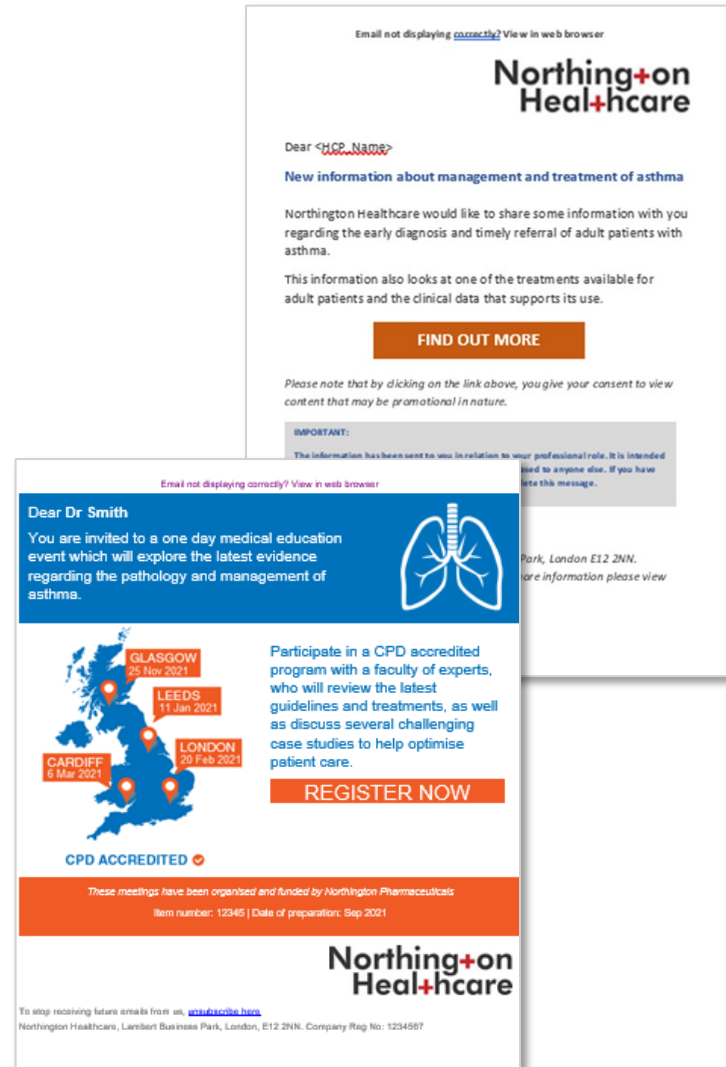
Solus emails: secondary care audiences

Targeted emails to hospital doctors, specialists and NHS management database

We'll package your content into a branded email, exposing your brand to targeted audiences from across **212 sub-specialties**



Segment this audience by location (geo/ICS), clinical interests and channel preferences in order to deliver targeted messaging and maximise engagement



Our clients use solus emails to:

- Advertise webinars and events
- Drive engagement with hospital doctors and specialist nurses
- Promote specialist products and services